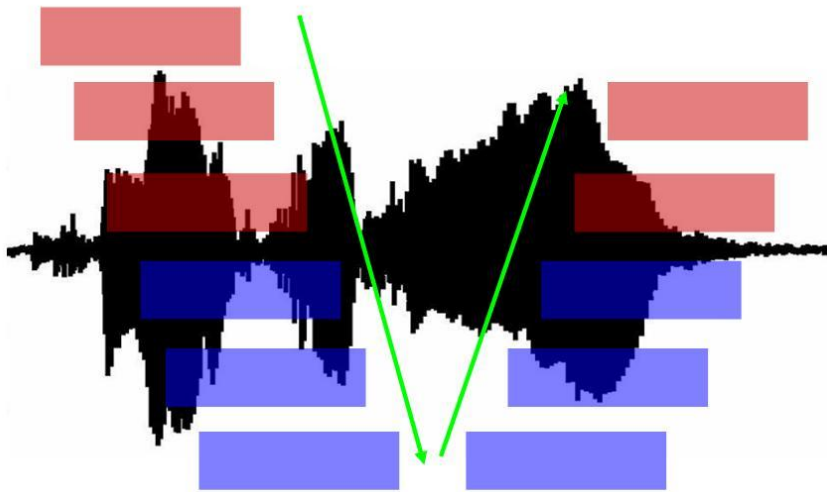


Powered by QL-
engineering



Dr.-Ing. Steffen Kuhl

Interim Engineering

Haneckstraße 22a

65719 Hofheim

mobil: (+49)176-43850121

mail: kuhl-interim@gmx.de

Vergleich BLDC-Modellbauregler vs. SLS

Würzburg | 2019

Messaufbau

Verwendete Sensoren

Powered by QL-
engineering

- Last
 - lastfrei
- Mikrophon
- Beschleunigungssensor
- Phasenstrom
- Drehzahl

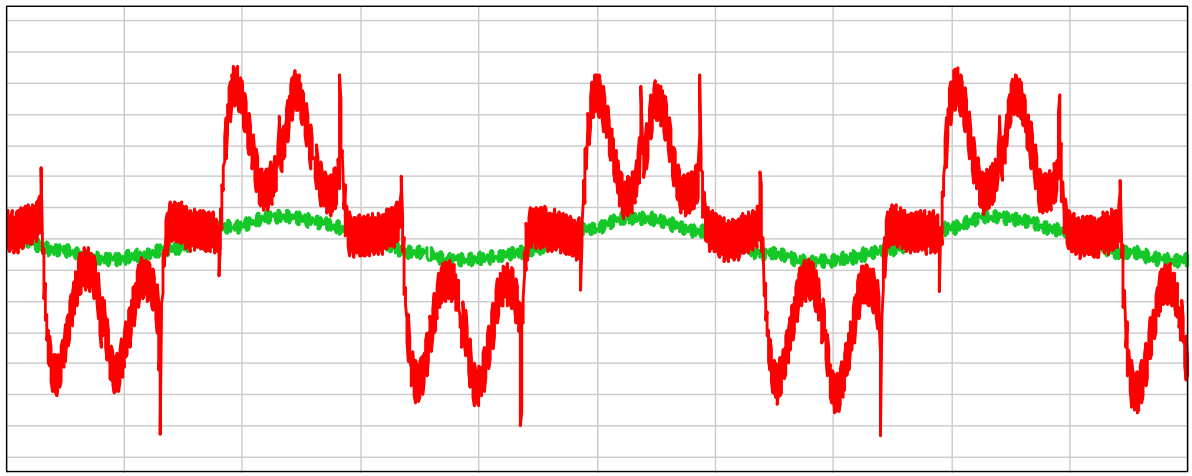


Phasenströme

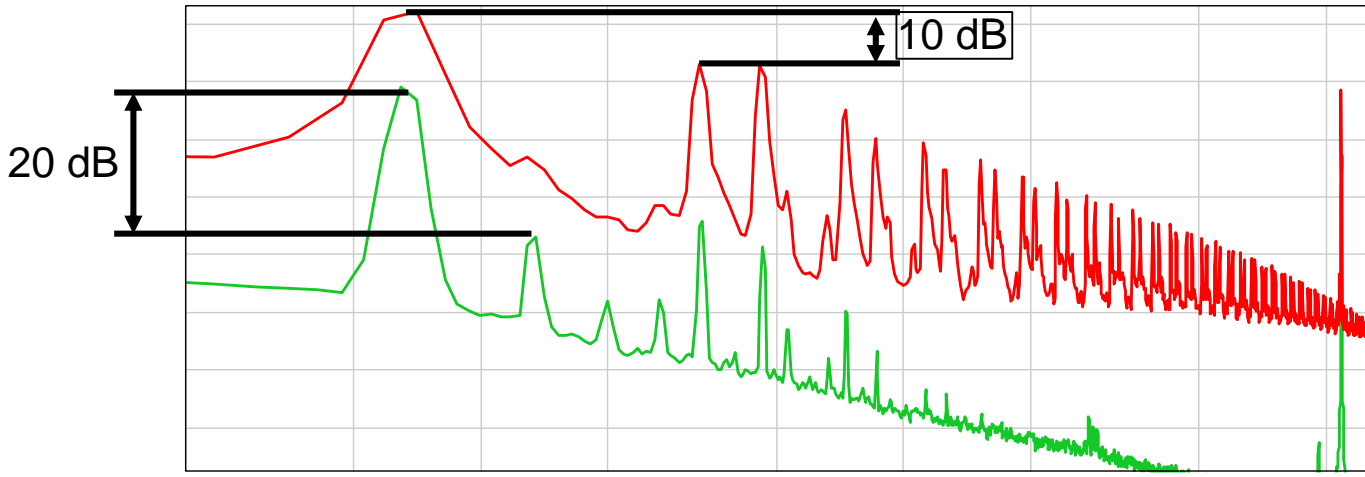
Zeitsignal & Spektrum, $n = \text{const}$

Powered by QL-engineering

SLS
BLDC-Regler



— —



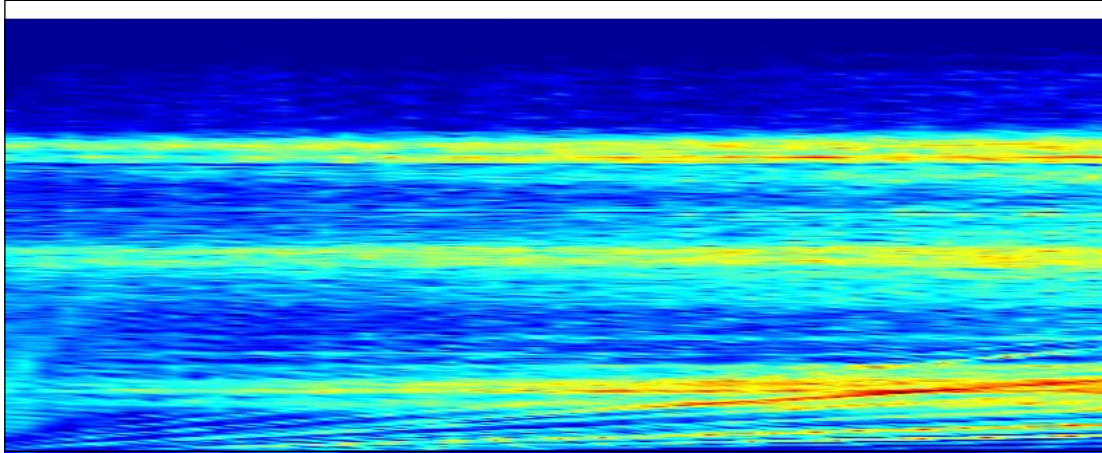
— —

Gehäusebeschleunigung

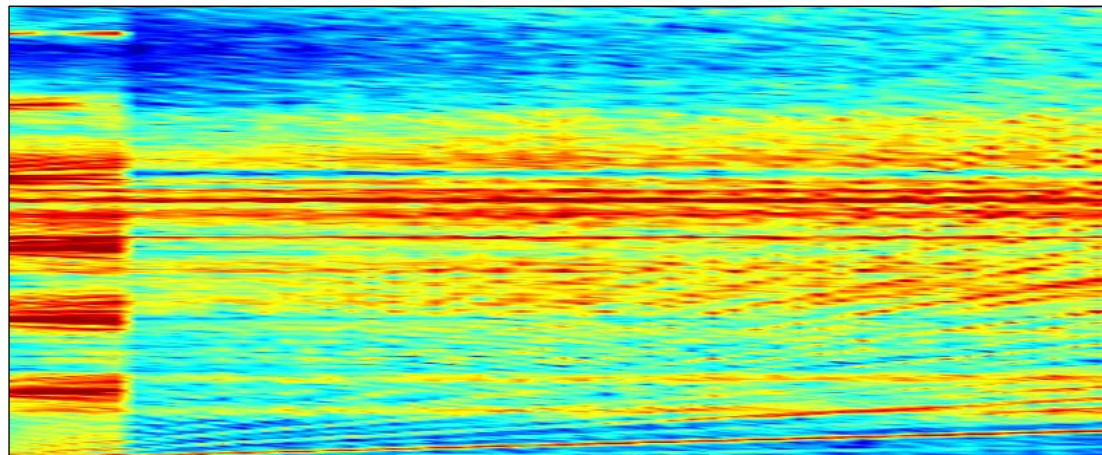
Campbelldiagramm Drehzahlrampe

Powered by QL-
engineering

SLS



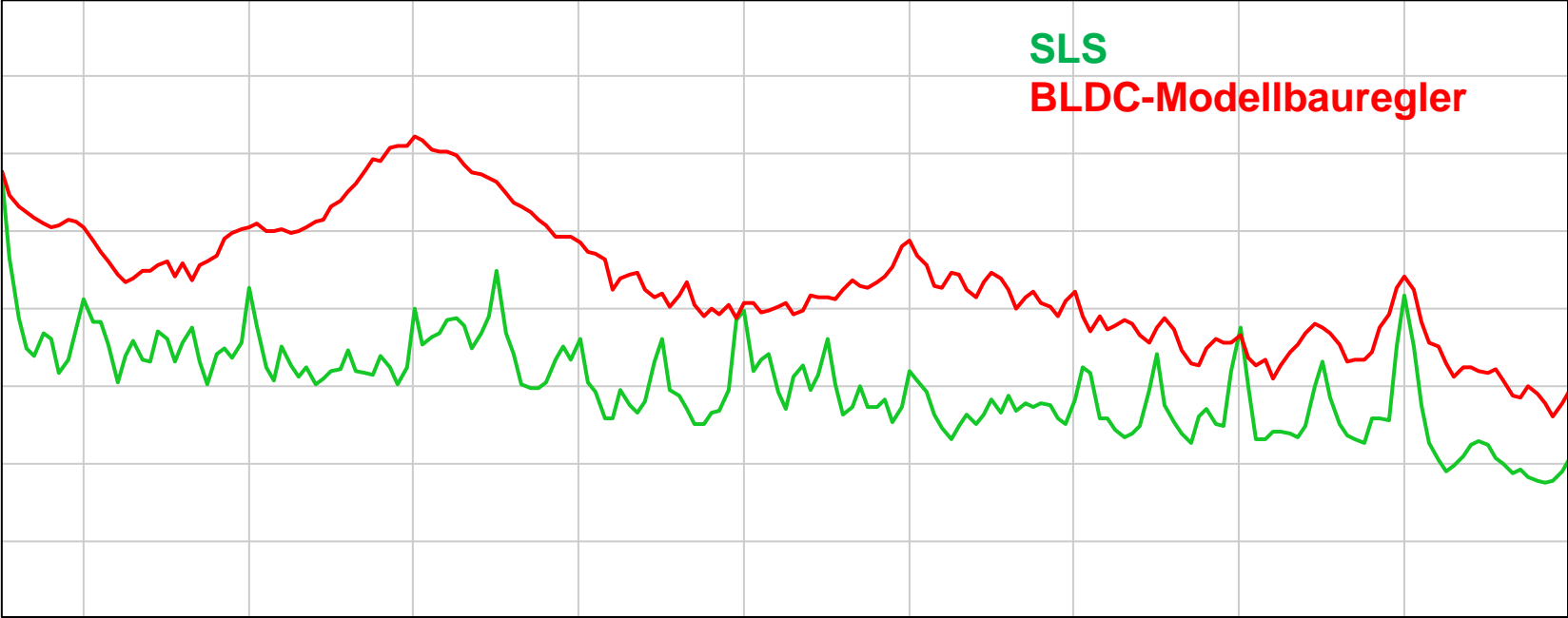
BLDC-
Modellbauregler



Gehäusebeschleunigung

Ordnungsanalyse

Powered by QL-engineering



— —

Vielen Dank für Ihre Aufmerksamkeit!